

THE HENSCHEL THREE-WAY TIPPER ACCESSORIES & OPTIONS

PRODUCT INFO

CABIN PROTECTION WITH PERFORATED SLATS

- › The cabin protection is attached, fixed firmly and adjusted to the driver's cab height.
- › Made of stamped steel lamellas - for good visibility to the rear and to optimise weight.
- › The integrated long material carrier can support loads of up to 150 kg.
- › Triple corrosion protection by galvanization, cathodic dip coating (CDC) and powder coating in the standard colour dark grey.

Tip: Loads that are longer than the body length can be placed at an angle for transport.



CABIN PROTECTION MADE OF PERFORATED SHEET METAL

- › The cabin protection is attached, fixed firmly and adjusted to the driver's cab height.
- › Made of stamped sheet steel - for good visibility to the rear.
- › The integrated long material carrier can support loads of up to 150 kg.
- › Triple corrosion protection by galvanization, cathodic dip coating (CDC) and powder coating in the standard colour dark grey.

Tip: Loads that are longer than the body length can be placed at an angle for transport.



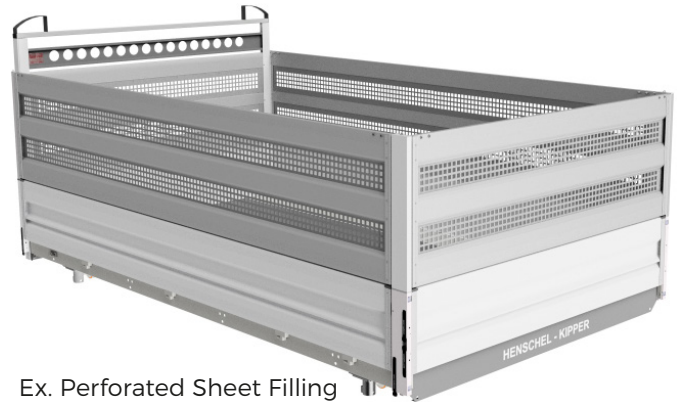
THE HENSCHEL THREE-WAY TIPPER

ACCESSORIES & OPTIONS

PRODUCT INFO

ALUMINIUM EXTENSION

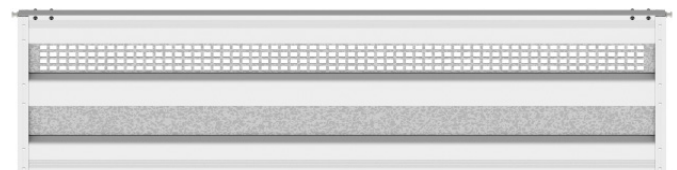
- › The aluminium extension consists of specially developed, anodized aluminium profiles and sheets that are particularly corrosion resistant.
- › The anodized aluminium extension is stiffer than the steel version thanks to its hollow profile structure.
- › Standard delivery in anodized aluminium, coating possible on request.
- › Profiles and sheets are joined with rivets.
- › Pendulum mounted – follows the tilting movement.
- › Armaton system locks for attaching the extension to the tipper.
- › Stanchions with tool-free removal of the panels are optionally available.
- › Integrated long material carrier.
- › Steel extensions can be replaced by aluminium extensions – without exchanging the stanchions.
- › The shape corresponds to the standard panels.
- › Six height variants available: 300 mm, 400 mm, 500 mm, 600 mm, 700 mm and 800 mm.
- › Up to 500 mm, the extensions consist of an upper and lower profile. From 600 mm on, a medium profile is added.
- › Various designs of filling plates are available depending on the height (see examples).
- › 20% lower weight of the extensions when using a version with perforated aluminium sheet metal compared to steel extensions.



Ex. Perforated Sheet Filling



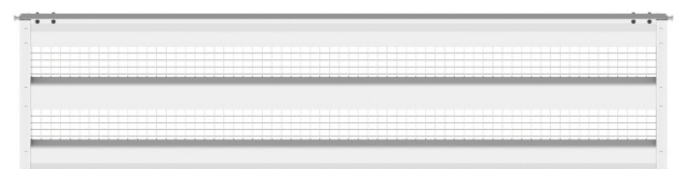
Sheet Metal Filling



MIX



Perforated Sheet Filling

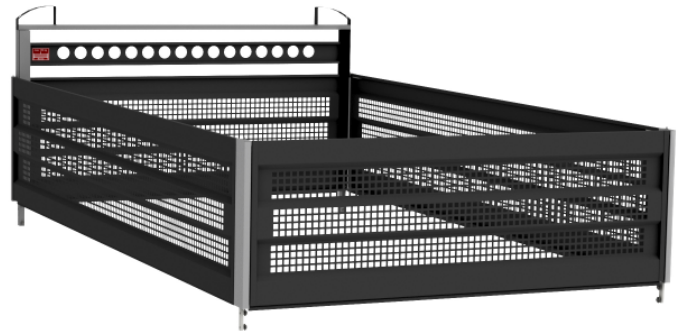


Grid Filling

Cab Protection Height 960mm	Extension 350 x 2030 mm H 700mm Steel	Alu-Extension 3500 x 2030 mm H 700mm Sheet Metal Filling	Alu-Extension 3500 x 2030 mm H 700mm MIX	Alu-Extension 3500 x 2030 mm H 700mm Perforated Sheet Filling	Alu-Extension 3500 x 2030 mm H 700mm Grid Filling
Weight	143,5 kg	120 kg	115 kg	111 kg	95 kg

STEEL EXTENSION

- › The steel extension is made of folded sheet metal.
- › Robust, durable welded construction.
- › Pendulum mounted – moves with the tilting movement.
- › Armaton system locks for attaching the extension to the tipper.
- › Integrated long material carrier.
- › Triple corrosion protection by galvanization, cathodic dip coating (CDC) and powder coating in the standard colour dark grey.
- › The shape corresponds to the standard panels.
- › Standard height 700 mm.
- › Painting in special colours possible on request (RAL colors).



FENDER

- › Plastic fenders for single and double wheels.
- › Version depending on vehicle type and variant.
- › Optimally adapted to the common driving racks.
- › Material for assembly available as a set.



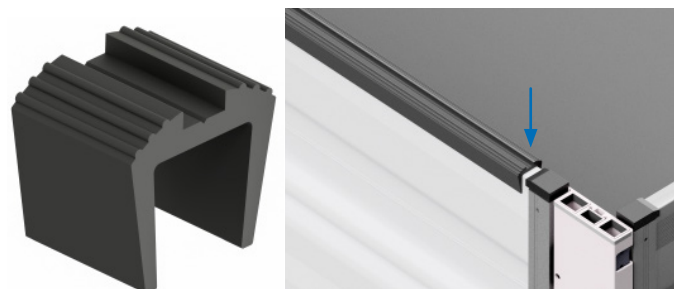
DEFLECTOR

- › Protects the rear panel if it strikes the trailer coupling.
- › Made of steel with triple corrosion protection by galvanizing, cathodic dip coating (CDC) and powder coating in the standard colour dark grey.
- › Mounting with rivets on the rear panel.



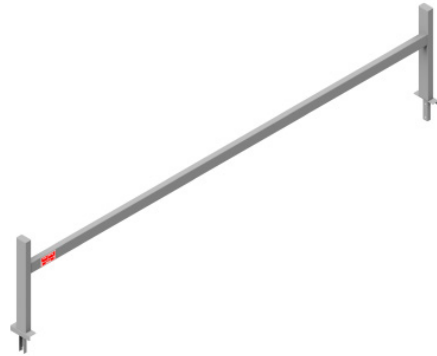
RUBBER PANEL PROTECTION

- › Special rubber profile, attached with rivets to the upper edges of the panels.
- › Can be mounted on side and rear panels.
- › Protects the aluminium profiles during loading and transport.



REAR LONG MATERIAL CARRIER

- › Longer loads can be transported by using the front and rear carriers.
- › Load capacity 150 kg.
- › Is not mounted on loading bay but is attached with screws on the rear stanchions – without limiting the loading area.



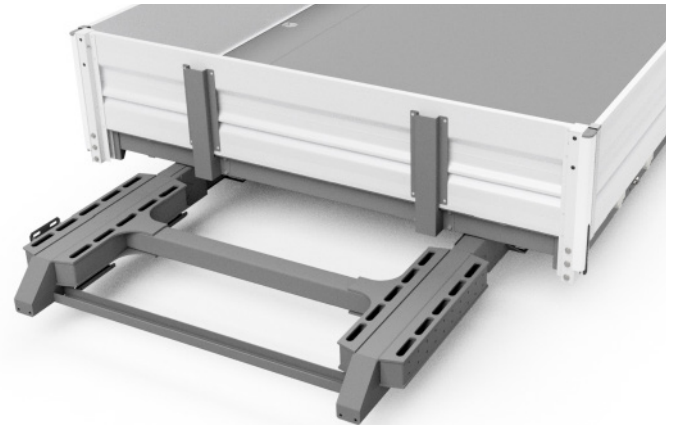
POWDER COATING (Painting)

- › The powder coating is available in various RAL colours.
 - › The panels can also be coated.
- Note: The stanchions cannot be coated.



FRAME EXTENSION FOR CRANES

- › Subframe extension for mounting a crane behind the driver's cab.
- › The welded construction is firmly fixed to the subframe.
- › Triple corrosion protection by galvanization, cathodic dip coating (CDC) and powder coating in the standard colour dark grey.
- › The reinforcement is compatible with Maxilift, Hiab and Palfinger cranes.
- › The standard length of the extension is 670 mm – longer if required.
- › The extension fits the frame heights 160 and 220 mm.
- › Construction made of rectangular steel profiles.
- › The crane is installed using specially manufactured mounting brackets. The position of the crane is variable.
- › A crossbeam increases the torsional stiffness.
- › Installation of side marker lights and under-ride guard by using special adapters.



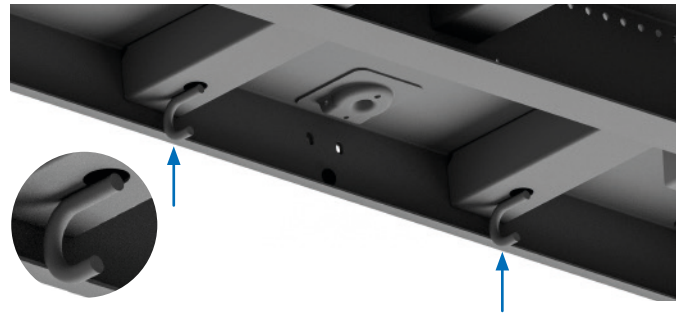
FRAME EXTENSION FOR REAR CAB TOOL/TRANSPORT BOX

- › Subframe extension for mounting a rear cabin tool/transport box.
- › Triple corrosion protection by galvanization, cathodic dip coating (CDC) and powder coating in the standard colour dark grey.
- › Individual length – as required.
- › A crossbeam increases the torsional rigidity.



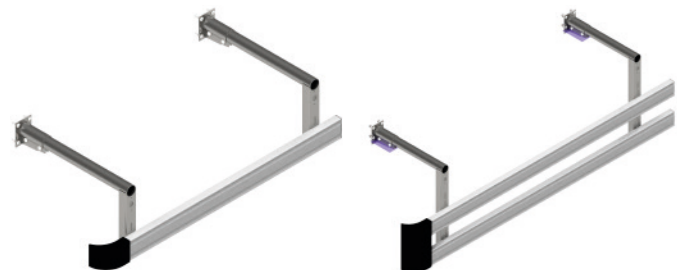
CLAMPING HOOK

- › The clamping hooks are firmly welded to the cross beams of the platform under the tilting surface.
- › For attaching safety nets.



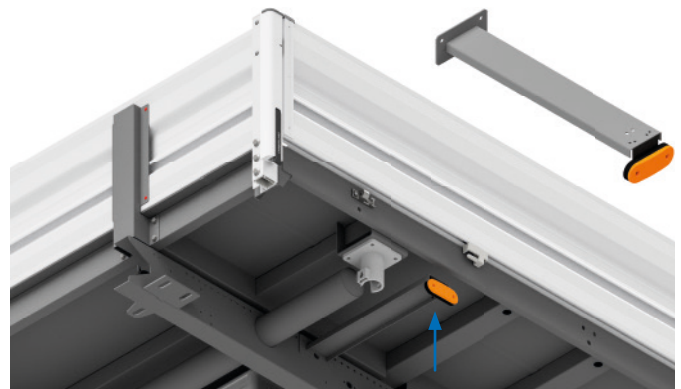
SIDE COLLISION PROTECTION

- › Construction made of galvanized steel brackets and aluminium press profiles.
- › Length and design (single or double) depending on country, vehicle type and variant.
- › Mounted on the subframe – with pre-drilled holes as delivered from the factory.



SIDE MARKER LIGHTS

- › LED lights.
- › Depending on the length of the vehicle, 4 or 6 SMLs can be mounted – 2 or 3 per side.
- › The lamps are mounted with holders and attached to the subframe.
- › The harness is installed and connected at the factory. It is connected to the vehicle's power supply by the vehicle builder.



HENSCHEL ENGINEERING AUTOMOTIVE Sp. z o.o.

ul. Belgijska 4
66-470 Kostrzyn n/O
Poland

GERRIT LÜDERS

Sales Director Europe | CEO

HENSCHEL ENGINEERING AUTOMOTIVE GmbH

Unter den Linden 10
10117 Berlin
Germany

Mob +49 160 94470015

gerrit.lueders@henschel-automotive.com

WWW.HENSCHEL-AUTOMOTIVE.COM**DISCLAIMER**

Product changes due to technical progress are reserved. No liability or guarantee is given for the timeliness, accuracy and completeness of the information and data provided. The illustrations, images and texts may contain accessories and special equipment that are not included in the standard scope of delivery. Typesetting and printing errors and mistakes excepted!