

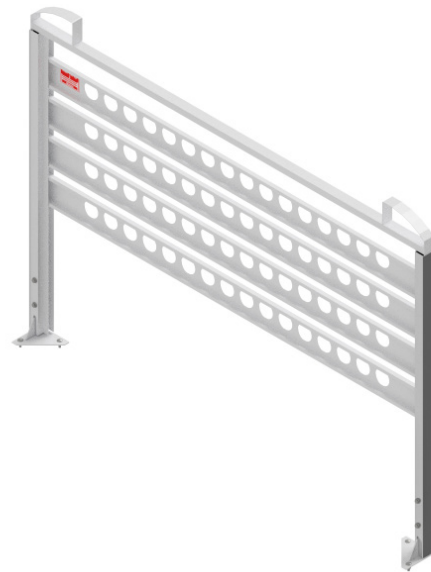
## THE HENSCHEL ALUMINIUM PLATFORM BODY ACCESSORIES & OPTIONS

### PRODUCT INFO

#### CABIN PROTECTION WITH PERFORATED SLATS

- › The cabin protection is mounted on the loading bed, fixed and adjusted to the cab height.
- › Made of punched steel lamellas – for good visibility to the rear and to optimise weight.
- › The integrated long material carrier can support loads of up to 150 kg.
- › Triple corrosion protection by galvanization, cathodic dip coating (CDC) and powder coating in the standard colour white aluminium RAL 9006.

Tip: Loads that are longer than the body length can be placed at an angle for transport.



#### CABIN PROTECTION WITH GRID

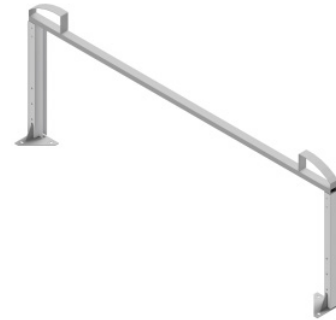
- › The cabin protection is mounted on the loading bay, fixed and adjusted to the cab height.
- › Steel frame with steel mesh – for even better visibility to the rear and to optimise weight.
- › The integrated long material carrier can support loads of up to 150 kg.
- › Triple corrosion protection by galvanization, cathodic dip coating (CDC) and powder coating in the standard colour white aluminium RAL 9006.

Tip: Loads that are longer than the body length can be placed at an angle for transport.



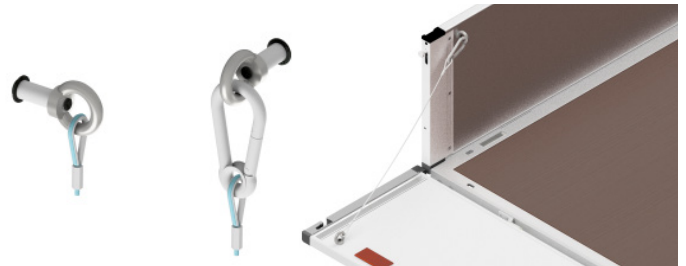
### REAR LONG MATERIAL CARRIER

- › Longer loads can be transported by using the front and rear carriers.
- › Load capacity 150 kg.
- › Installation on loading bay.



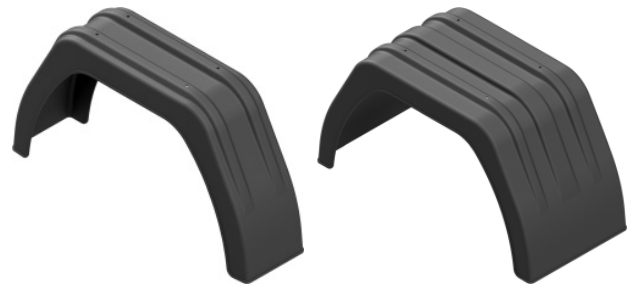
### REAR PANEL HOLDER

- › Rope with snap hook to secure the rear panel at 90° (same level as loading bed).
- › Ideal for transporting long materials – this way the lights are not obscured.



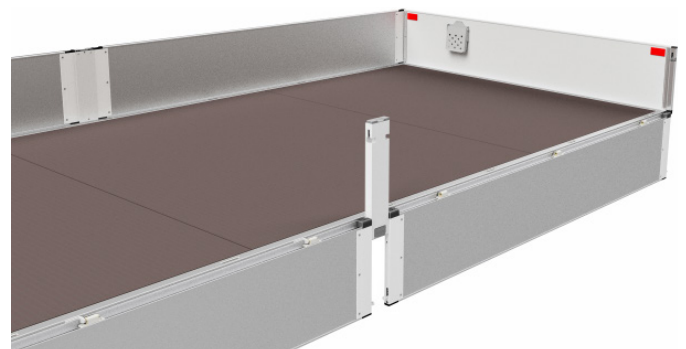
### FENDER

- › Plastic fenders for single and double wheels.
- › Version depending on vehicle type and variant.
- › Optimally adapted to the current driving racks.
- › Mounting adapter available depending on chassis.



### CENTRAL STANCHION

- › Bodies with an internal length of 4,600 mm or more are equipped with one central stanchion per panel as standard.
- › The central stanchion is also optionally available for shorter bodies.
- › The central stanchion is easy to fit and remove: The stanchion is pulled out using a lever. This enables easy access during loading.



### PANEL MODIFICATION

- › The panel is recessed into the frame – this makes it easier to operate the towbar.



### TARPAULIN/BRACING HOOKS

- › Made of galvanized steel.
- › Distance between hooks on side panel 400-500 mm.
- › The hooks are mounted at regular distances depending on the length of the panel – starting at 200 mm from the back end of the rear panel.
- › The distance between the hooks on the rear panel is 150 mm.



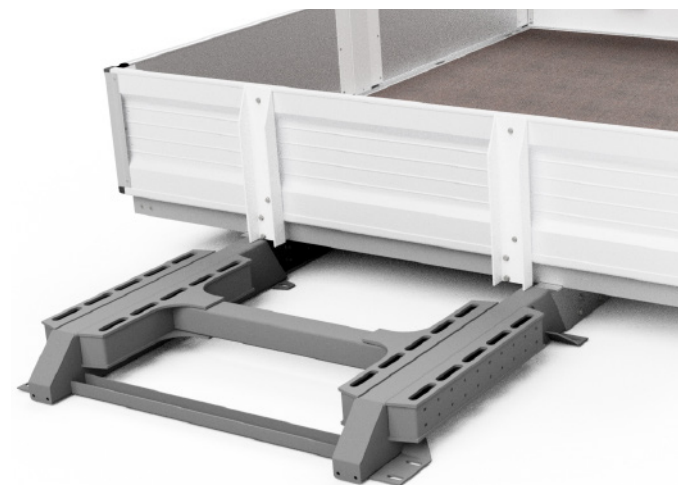
### POWDER COATING (Painting)

- › Powder coating of cabin protection and panels is possible in various RAL colors.
- Note: The stanchions and frame cannot be coated.



### FRAME EXTENSION FOR CRANES

- › Subframe extension for mounting a crane behind the driver's cab.
- › The aluminium construction and the steel welding construction are firmly connected to each other.
- › Triple corrosion protection by galvanization, cathodic dip coating (CDC) and powder coating in the standard colour white aluminium RAL 9006.
- › The reinforcement is compatible with Maxilift, Hiab and Palfinger cranes.
- › The standard length of the extension is 670 mm – longer if required.
- › Construction made of rectangular steel profiles.
- › The crane is installed using specially manufactured mounting brackets. The position of the crane is variable.
- › A crossbeam increases the torsional stiffness.
- › Installation of side marker lights and under-ride protection using special adapters.



Ex. (Crane not incl.)

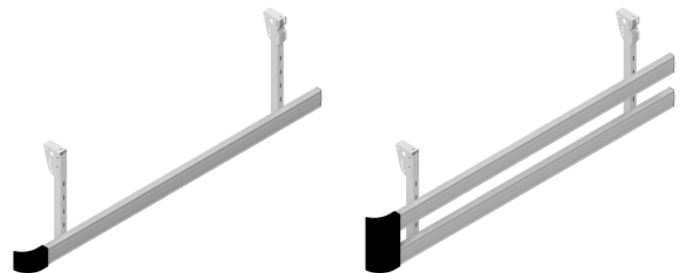
### FRAME EXTENSION FOR REAR CAB TOOL/TRANSPORT BOXES

- › Subframe extension for mounting a rear cabin tool/transport box.
- › Individual length – as required.



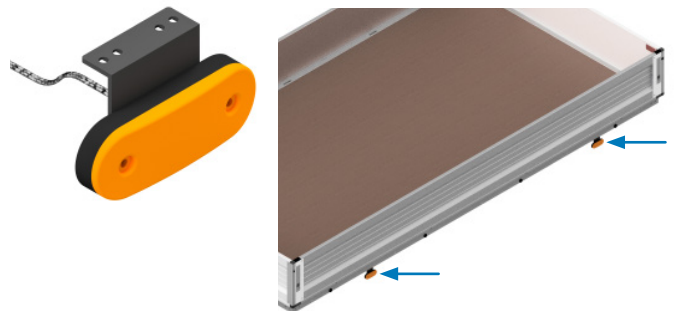
### SIDE COLLISION PROTECTION

- › Construction made of galvanized steel brackets and aluminium pressed profiles.
- › Length and design (single or double) depending on country, vehicle type and variant.
- › Installation on the platform frame.



### SIDE MARKER LIGHTS

- › LED lights.
- › Depending on the length of the vehicle, 4 or 6 SMLs can be mounted – 2 or 3 per side.
- › The lamps are mounted with holders and attached to the subframe.
- › The harness is installed and connected at the factory. It is connected to the vehicle's power supply by the vehicle builder.



### HENSCHEL ENGINEERING AUTOMOTIVE Sp. z o.o.

ul. Belgijska 4  
66-470 Kostrzyn n/O  
Poland

### GERRIT LÜDERS

Sales Director Europe | CEO

### HENSCHEL ENGINEERING AUTOMOTIVE GmbH

Unter den Linden 10  
10117 Berlin  
Germany

Mob +49 160 94470015

gerrit.lueders@henschel-automotive.com

### [WWW.HENSCHEL-AUTOMOTIVE.COM](http://WWW.HENSCHEL-AUTOMOTIVE.COM)

#### DISCLAIMER

Product changes due to technical progress are reserved. No liability or guarantee is given for the timeliness, accuracy and completeness of the information and data provided. The illustrations and texts may contain accessories and special equipment that are not included in the standard scope of delivery. Typesetting and printing errors and mistakes excepted!